

Dell™ KM632 Desktop Wireless Keyboard and Mouse

Setup

Keyboard

[Features](#)

[Troubleshooting](#)

[Specifications](#)

Mouse

[Features](#)

[Troubleshooting](#)

[Specifications](#)

Statutory Information

[Warranty](#)

[Regulatory](#)

[Certifications](#)

Information in this document is subject to change without notice.

© 2011 Dell Inc. All rights reserved.

Reproduction of these materials in any manner whatsoever without the written permission of Dell Inc. is strictly forbidden. Trademarks used in this text: Microsoft® and Windows® are registered trademarks of Microsoft Corporation in the United States and/or other countries; Dell™ and the Dell logo are trademarks of Dell Inc.

Other trademarks and trade names may be used in this document to refer to either the entities claiming the marks and names or their products. Dell Inc. disclaims any proprietary interest in trademarks and trade names other than its own.

2011 - 05 Rev. A00

Restrictions and Disclaimers

The information contained in this document, including all instructions, cautions, and regulatory approvals and certifications, is

provided by the supplier and has not been independently verified or tested by Dell. Dell cannot be responsible for damage caused as a result of either following or failing to follow these instructions.

All statements or claims regarding the properties, capabilities, speeds or qualifications of the part referenced in this document are made by the supplier and not by Dell. Dell specifically disclaims knowledge of the accuracy, completeness or substantiation for any such statements. All questions or comments relating to such statements or claims should be directed to the supplier.

Export Regulations

Customer acknowledges that these Products, which may include technology and software, are subject to the customs and export control laws and regulations of the United States ("U.S.") and may also be subject to the customs and export laws and regulations of the country in which the Products are manufactured and/or received. Customer agrees to abide by those laws and regulations. Further, under U.S. law, the Products may not be sold, leased or otherwise transferred to restricted end-users or to restricted countries. In addition, the Products may not be sold, leased or otherwise transferred to, or utilized by an end-user engaged in activities related to weapons of mass destruction, including without limitation, activities related to the design, development, production or use of nuclear weapons, materials, or facilities, missiles or the support of missile projects, and chemical or biological weapons.

Setup: Dell™ KM632 Desktop Wireless Keyboard and Mouse

System Requirements

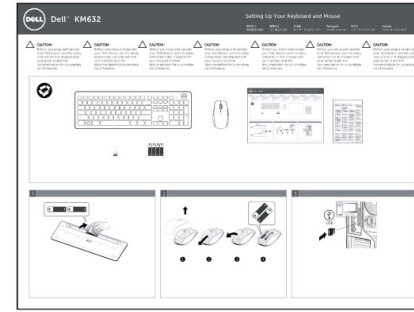
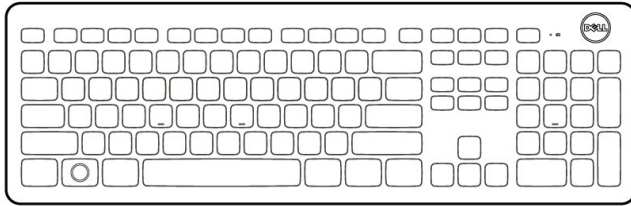
The following is a list of system requirements:

- One USB port (for the USB Receiver)
- Microsoft Windows 7/Vista/XP, Media Center Edition and Linux Ubuntu

Getting Started

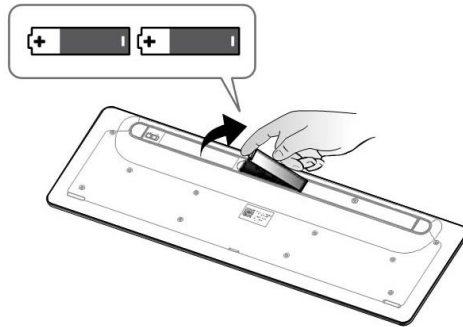
[Contents of the Box](#) • [Setting Up](#) •

Contents of the Box

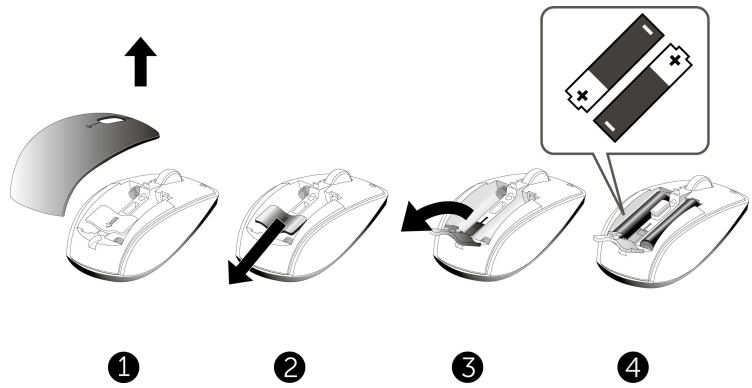


Setting Up

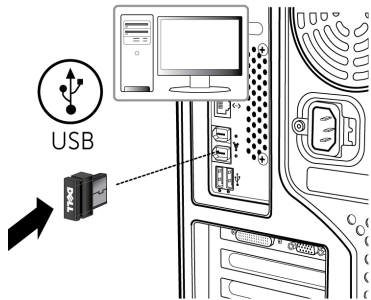
Step 1: Setting up the Keyboard



Step 2: Setting up the Mouse



Step 3: Connect the USB Receiver to Computer



If your keyboard and mouse are NOT working, please refer to [Troubleshooting: Dell™ KM632 Desktop Wireless Keyboard](#) or [Troubleshooting: Dell™ KM632 Desktop Wireless Mouse](#)

Please read all restrictions and disclaimers.

[Back to Contents Page](#)

Features: Dell KM632 Wireless Desktop Wireless Keyboard

[Overview](#) • [Multimedia Functions](#) • [Application Keys and Windows Keys](#) • [On-Screen Display](#) •

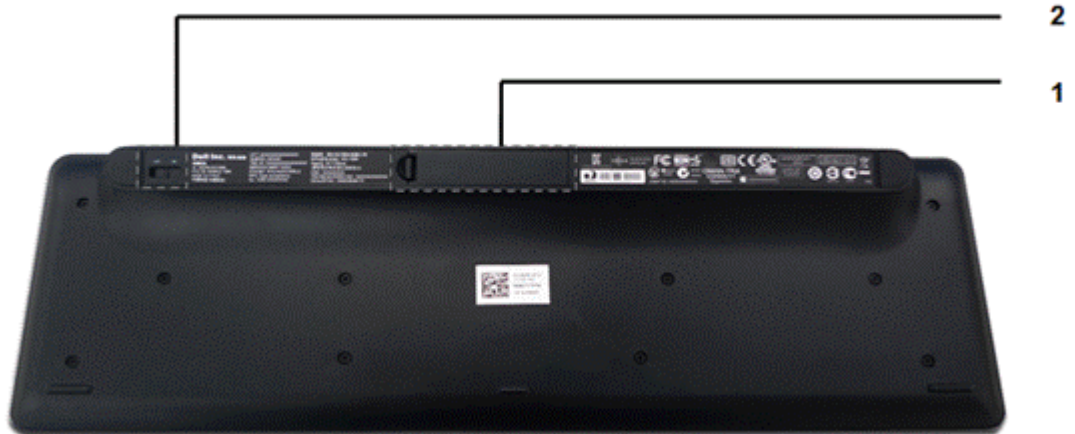
Overview

Dell™ KM632 Desktop Wireless Keyboard Front View



Label	Description/Function
1 Battery Indicator	Green-colored Power Indicator Amber-colored Low Battery Indicator
2 Sleep Key	Press the Sleep key to put computer to Standby Mode. To wake up computer, press any key on the keyboard.
3 Multimedia Functions	Mute, Volume up, Volume down, Play/Pause, Skip forward, Skip backward

Dell™ KM632 Desktop Wireless Keyboard Back View



Label



- 1 Battery Compartment
- 2 On/Off Switch

Multimedia Functions

	Mute the media that is playing
	Volume Down
	Volume Up
	Skips back to



	previous track
	Play/Pause
	Skips forward to next track

Application Keys and Windows Keys

Key Combinations	Function
 Application key	The same shortcut menu as right-clicking the desktop while pressing this key
 Windows key	Start Menu
Windows key + E	Windows Explorer
Windows key + F	Find Document
Windows key + M	Minimize All
Windows key + R	Display Run Dialog box
Windows key + F1	Display Help Menu
Windows key + TAB	Activate next taskbar button
Windows key + Ctrl + F	Find Computer

Windows key + Shift + M	Undo Minimize All
Windows key + Pause/Break	Perform a system function

On-Screen Display

	Caps Lock On
	Caps Lock Off

- Caps Lock — allows the typing of all caps where appropriate, such as titles at the top of a page, without requiring the typist to manually keep the shift key depressed as long as needed.
- If the Caps Lock indicator does not appear on the screen, please download the driver from www.support.dell.com/KM632.

Please read all [restrictions and disclaimers](#).

[Back to Contents Page](#)

Troubleshooting: Dell™ KM632 Desktop Wireless Keyboard

If you have problems with your keyboard:

- Check if the batteries are placed in the correct position.
- Check if the On/Off switch is on.
- After installing the batteries, you will see a green-colored power indicator on the front of the keyboard. The LED will fade off after 15 seconds.
- Remove and insert the USB receiver again.
- If you still have a problem, restart your computer.
- Try the USB Receiver on another USB connector.

Please read all [restrictions and disclaimers](#).

Specifications: Dell™ KM632 Desktop Wireless Keyboard

General • Electrical • Physical • Environmental
• 2.4 GHz Wireless •

General

Manufacturer	Chicony Electronics Co., Ltd.
Model number	KG-1089
Connection type	2.4 GHz Wireless technology
Supported Operating Systems	Microsoft® Windows® 7/Vista/ XP and Media Center Edition and Linux Ubuntu.
Rollover	Pseudo N-key rollover capability
Key mechanism	Rubber dome

Electrical

Operating Voltage	2.0 V to 3.2V
Battery life	approx. 6 months
Battery require	2*AA Alkaline

Physical Characteristics

Height	31.64 mm
Length	444.38 mm

Width	141.01 mm
Weight	497.8g, without batteries

Environmental

Operating temperature	0 °C to 40 °C
Storage temperature	-40 °C to 65 °C
Operating humidity	90%max Relative Humidity, non condensing
Storage humidity	95%max Relative Humidity, non condensing

2.4 GHz Wireless

Radio transmission	Bi-directional, Enhanced Shock Burst™
Range	Up to 10 meters

Please read all [restrictions and disclaimers](#).

[Back to Contents Page](#)

Features: Dell™ KM632 Desktop Wireless Mouse

Dell™ KM632 Desktop Wireless Mouse Front View



Label

- 1 Left Mouse Click
- 2 Right Mouse Click
- 3 Scroll Wheel
- 4 Green-colored Power Indicator
Amber-colored Low Battery Indicator

Dell™ KM632 Desktop Wireless Keyboard Back View



Label

- 1 On/Off Switch
- 2 Optical Sensor

Please read all [restrictions and disclaimers](#).

[Back to Contents Page](#)

Troubleshooting: Dell™ KM632 Desktop Wireless Mouse

If you have problems with your mouse:

- Check if the batteries are placed in the correct position.
- Check if the On/Off switch is on.
- After installing the batteries, you will see a green-colored power indicator on the front of the mouse. The LED will fade off after 15 seconds.
- Remove and insert the USB receiver again.
- If you still have a problem, restart your computer.
- Try the USB Receiver on another USB connector.

Please read all [restrictions and disclaimers](#).

Specifications: Dell™ KM632 Desktop Wireless Mouse

General • Electrical • Physical • Environmental
• 2.4 GHz Wireless •

General

Manufacturer	Chicony Electronics Co., Ltd.
Model number	MG-1090
Connection type	2.4 GHz Wireless technology
Supported Operating Systems	Microsoft® Windows® 7/Vista/ XP and Media Center Edition and Linux Ubuntu.

Electrical

Operating Voltage	2.0V to 3.2V
Battery life	approx. 6 months
Battery require	2*AA Alkaline

Physical Characteristic

Height	38.97 mm
Width	64.12mm
Length	113.06 mm
Weight	81.8 g, without batteries

Environmental

Operating temperature	0 °C to 40 °C
Storage temperature	-40 °C to 65 °C
Operating humidity	90%max Relative Humidity, non condensing
Storage humidity	90%max Relative Humidity, non condensing

2.4 GHz Wireless

Radio transmission	Bi-directional, Enhanced Shock Burst™
Range	Up to 10 meters

Please read all [restrictions and disclaimers](#).

[Back to Contents Page](#)

Warranty: Dell™ KM632 Desktop Wireless Keyboard and Mouse

Limited Warranties and Return policies

Dell-branded products carry a 1-year limited hardware warranty.

If purchased together with Dell system, it will follow the system warranty.

For U.S. customers: This purchase and your use of this product are subject to Dell's end user agreement, which you can find at www.dell.com/terms. This document contains a binding arbitration clause.

For European, Middle Eastern and African customers: Dell- branded products that are sold and used are subject to applicable national consumer legal rights, the terms of any retailer sale agreement that you have entered into (which will apply between you and the retailer) and Dell's end user contract terms. Dell may also provide an additional hardware warranty – full details of the Dell end user contract and warranty terms can be found by going to www.Dell.com, selecting your country from the list at the bottom of the "home" page and then clicking the "terms and conditions" link for the end user terms or the "support" link for the warranty terms.

FOR NON-U.S. CUSTOMERS: Dell- branded products that are sold and used are subject to applicable national consumer legal rights, the terms of any retailer sale agreement that you have entered into (which will apply between you and the retailer) and Dell's warranty terms. Dell may also provide an additional hardware warranty – full details of Dell's warranty terms can be found by going to www.Dell.com, selecting your country from the list at the bottom of the "home" page and then clicking the "terms and conditions" link or the "support" link for the warranty terms.

Please read all [restrictions and disclaimers](#).

Regulatory: Dell™ Desktop KM632 Wireless Keyboard and Mouse Bundle

Regulatory and Safety Information
Keyboard Regulatory Model: KG-1089
Mouse Regulatory Model: MG-1090
Dongle Regulatory Model: RG-1091

Regulatory Information

These devices comply with Part 15 of the FCC Rules. Operation of the devices is subject to the following two conditions: (1) The devices may not cause harmful interference, and (2) The devices must accept any interference that may cause undesired operation.

This equipment has been tested and found to comply with the limits for a Class B digital device, pursuant to Part 15 of the FCC Rules. These limits are designed to provide reasonable protection against harmful interference in a residential installation. This equipment generates, uses, and can radiate radio frequency energy. If the equipment is not installed and used in accordance with the instructions, the equipment may cause harmful interference to radio communications. There is no guarantee, however, that such interference will not occur in a particular installation. If this equipment does cause harmful interference to radio or television reception (which can be determined by turning the equipment off and on), the user is encouraged to try to correct the interference by taking one or more of the following measures:

- Relocate this device.
- Increase the separation between the device and the receiver.
- Connect the device into an outlet on a circuit different from that of other electronics.
- Consult the dealer or an experienced radio technician for help.

Agency Approval: FCC, CE, cULus, ICES, VCCI, NOM, BSMI, NCC, C-Tick, SRRC, TELEC, IDA, KCC.

Please read all [restrictions and disclaimers](#).

[Back to Contents Page](#)

Certifications: Dell™ KM632 Desktop Wireless Keyboard and Mouse

Microsoft WHQL Logo

The Dell™ KM632 Desktop Wireless Keyboard and Mouse have passed WHQL logo testing by Microsoft Windows Hardware Quality Labs.

WHQL Logo is a certification scheme operated by Microsoft Windows Hardware Quality Labs. In this case it ensures that hardware is compatible with Microsoft Operating Systems. The keyboard and mouse are qualified through the use of WHQL test kits and has been included in the [Microsoft Hardware Compatibility List](#).

Please read all [restrictions and disclaimers](#).

[Back to Contents Page](#)